

## **ELECTRICITY METER SAFETY**

### **Electricity Meters**

Electricity meters and associated equipment are the property of Connect Saint Helena Ltd.

**Live electricity flows between the service cut out fuse and the electricity meter and then on to the customer's distribution board. Damage to either the meter or the service cut-out fuse is potentially extremely dangerous as live parts could be exposed.**

**Any obvious signs of damage, disrepair or tampering must be reported to Connect Saint Helena in order that the meter can be inspected. The safety of our customers and anyone else who comes into contact with the meter is paramount.**

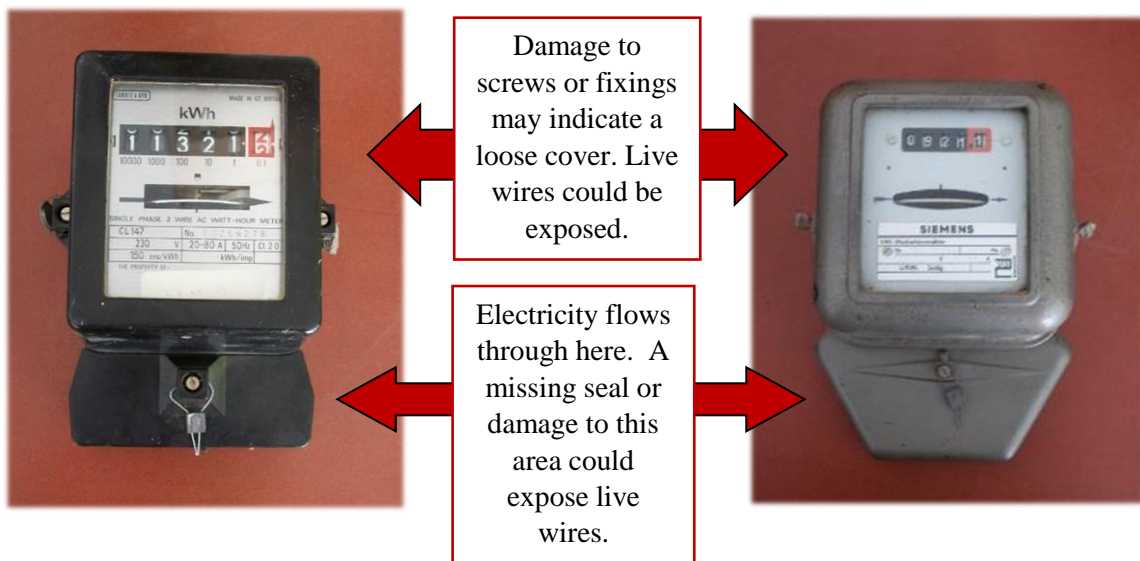
Obvious signs of damage to the meter are:

- Missing termination covers
- Cracks to any part of the housing
- Broken display glass
- The meter seals are missing

Obvious signs of damage to the service cut-outs fuses are:

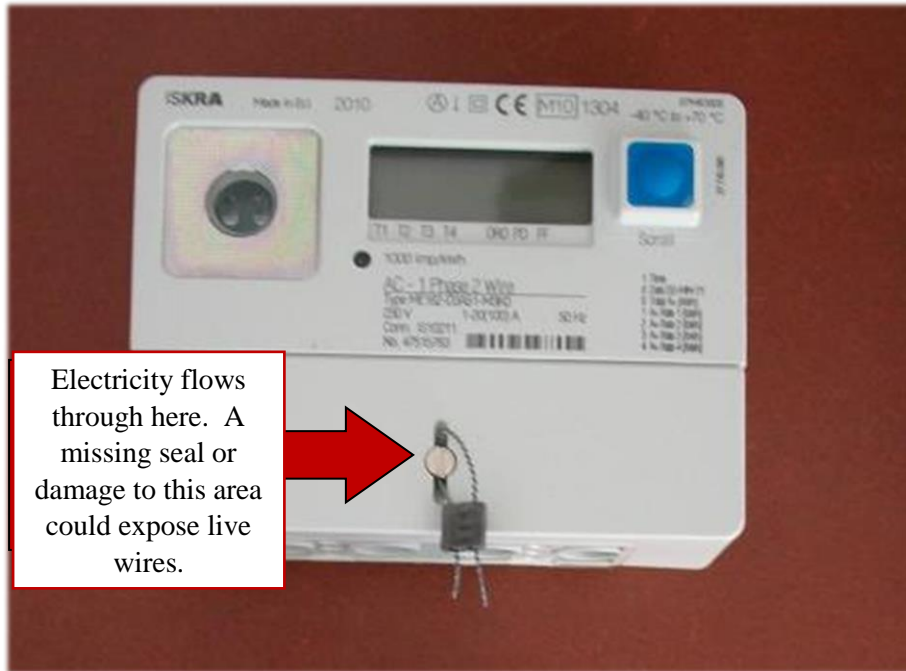
- The cut-out fuse housing seals are broken or missing
- The cut-out fuse housing is damaged.

### **EXAMPLES OF SINGLE PHASE ELECTRICITY METERS WITH INTACT SECURITY SEALS**

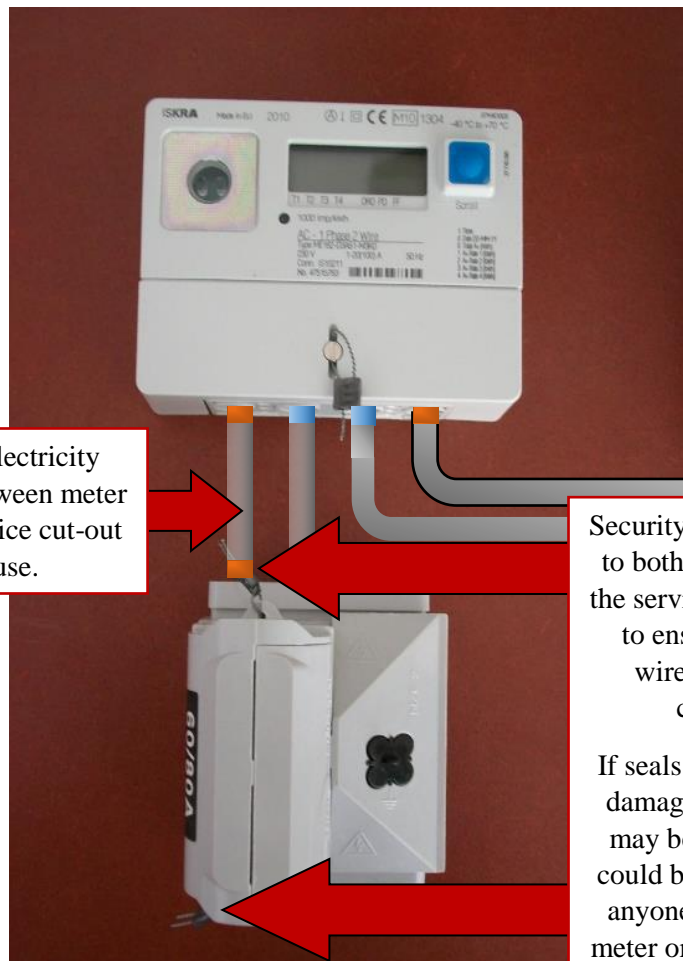


## EXAMPLE OF SINGLE PHASE METER AND SERVICE CUT OUT FUSE

The service cut-out fuse is an important safety feature and the picture below shows the relationship to the electricity meter.



Electricity flows through here. A missing seal or damage to this area could expose live wires.



Live electricity flow between meter and service cut-out fuse.

Security seals are fitted to both the meter and the service-cut out fuse to ensure that live wires are safely covered.

If seals are missing or damaged, the covers may be loose which could be dangerous to anyone touching the meter or safety cut out.

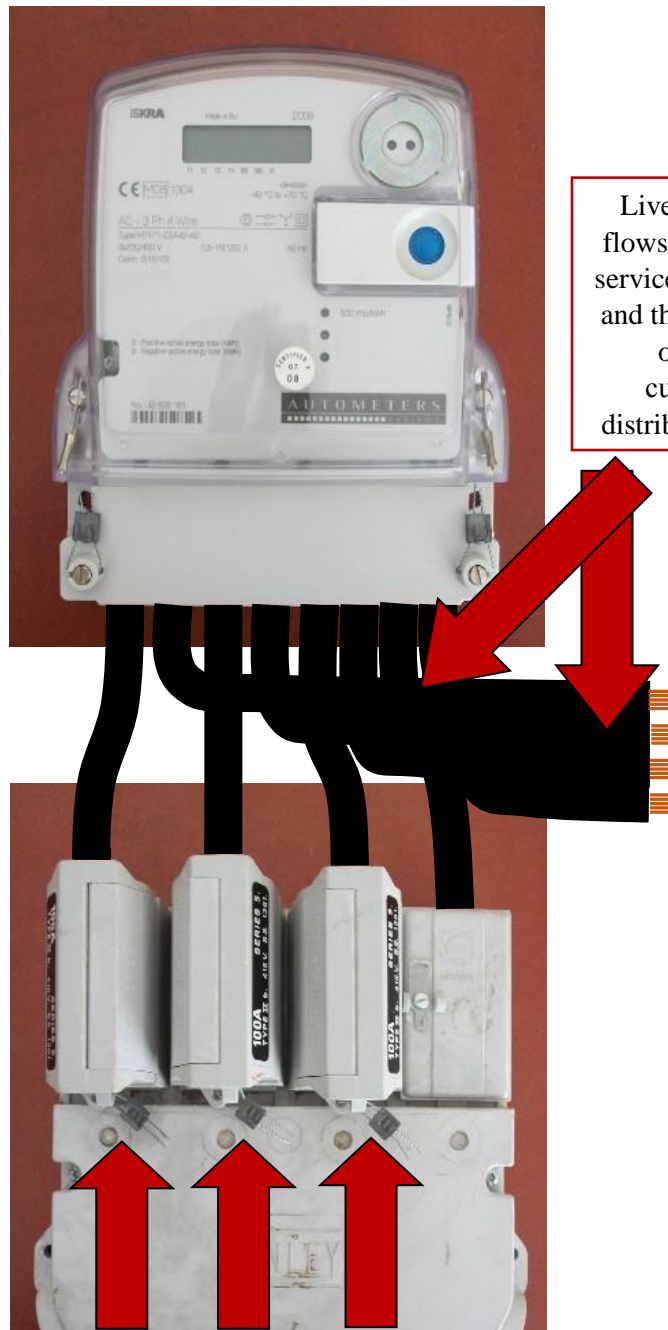
## EXAMPLE OF A THREE PHASE ELECTRICITY METER WITH SECURITY SEALS



Damage to screws, fixings or the cover, may indicate a loose cover. Live parts could be exposed.

4 in-tact security seals.  
Electricity flows through the lower part of the meter. A missing seal or damage to this area could expose live parts.

## THREE PHASE METER AND SERVICE CUT-OUT FUSE



Live electricity flows between the service cut-out fuse and the meter then on to the customer's distribution board.

Security seals are fitted to both the meter and the service-cut out fuse to ensure that live wires are safely covered.

If seals are missing or damaged, the covers may be loose which could be dangerous to anyone touching the meter or safety cut out.